

Tri.ngle News

The newsletter of Liss Community Association

Spring 2014

Liss Historical Society

Clubs, classes, films and more!

Liss Film Festival 2014 HUGE Success

The red carpet was rolled out, the festival began. It was declared open in a witty speech from our special guest Damien Hinds MP. From the toe-tapping tunes of Sunshine on Leith to the poignancy of Philomena, the "Best of British" theme was a great success.

Continued inside...



OPEN DAY AND BIG LISS BAKE OFF



OPEN DAY AND BIG LISS BAKE OFF

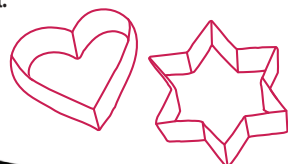
Saturday 19th July 2014

Groups, classes and regular users will be setting up stalls, displays and taster sessions. This is your chance to find out what goes on at The Triangle.

Calling all Bakers! We will run a second Big Liss Bake Off with an

adults' and a children's class.

If you would like to enter, send us your email address and we will send you details once the competition details and entry forms have been finalised.



Cinema nights Spring Season

Centre manager Sally and the Triangle volunteers worked incredibly hard to ensure that everyone was made welcome and enjoyed the film festival experience.

The decorations by the Triangle After School Club were much admired, as were the beautifully set tables at the closing Gala. Sincere thanks go out to all those who sponsored films. Looking at the feedback comments, it seems that Liss cinema fans would like to make walking the red carpet a regular event to banish those winter blues, and we look forward to welcoming everyone at next year's festival, and also at our regular monthly cinema nights.



**April 19th
Gravity**

Stars: Sandra Bullock, George Clooney, Ed Harris.



**May 24th
12 Years a Slave**

Stars: Chiwetel Ejiofor, Michael Fassbender, Paul Dano, Paul Giamatti, Lupita Nyong'o, Sarah Paulson, Brad Pitt, Alfre Woodard.



**21st June
The Railway Man**

Stars: Nicole Kidman, Colin Firth, Stellan Skarsgård, Jeremy Irvine, Hiroyuki Sanada.

Tickets £6.00 adult when bought in advance, £7.00 on the door. Doors for all films unless specified open at 7pm for film at 7:30pm. Further details of each film, together with programme times, can be found on the Triangle website.

CROSSOVER FUNDRAISING MORNING

The Coffee Bar volunteers hosted a coffee morning for Crossover which raised over £500 and will be used towards replacing some of their equipment lost in the recent flooding of their building.

WELL DONE

to the Ladies of the Village Club who have raised over

£300

knitting Easter chicks. All proceeds will go to The Rosemary Foundation.

THE ROSEMARY FOUNDATION



LISS HORTICULTURAL SOCIETY

This year started well with the AGM and Cheese & Wine Party, a very popular event with an increasing number of people attending each year.

The February meeting was all about 'Ground Cover' while the topic for the March meeting was mainly on how to care for plants indoors.

FUTURE EVENTS:

6th May Simple Propagation by Brian Kidd, 7.30pm

17th May Plant Sale at the Whistle Stop

3rd August The Summer Show – open to all

More information is available from the Secretary, Sue Jordan, tel: 893454 or visit our website: www.liss-horticultural-society.co.uk.

Triangle After School Club

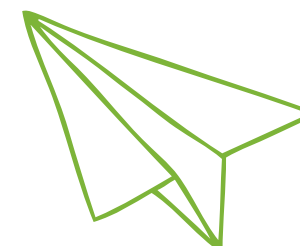


We were very pleased with the feedback received from our display of Ancient Egyptian art exhibited in the LCA annual art exhibition. The children enjoyed creating it and all worked very hard.

Disaster struck on Christmas Eve when our greenhouse blew over. This contained bulbs planted in decorated pots destined for a competition organised by Liss Horticultural Society. (Thank you Jim for clearing it all up. We were able to replant in the new year and they were judged by Sharon Stratton from LHS.

The winners were as follows: Infant Category 1st Jenny Startup, 2nd Toby Young, 3rd Joe Startup. Junior Category 1st Brooke Stokes, 2nd Miya Goodyear, 3rd Joanna Des-Bois. All the children are looking forward to the LHS summer show.

It has been a busy 17th year so far but we still have spaces. Enquires can be made at the community centre office Liss 301000. Enquiries can be made at The Triangle office on 01730 301000.



Sunday 8th June – The Annual LiDBA charity bike ride.

If you would like to support The Triangle and get fit why not join our team! We will enter you and pay your entry fee and, in return, ask you to raise £50 in sponsorship.



INDOOR MARKETS

Selling everything from home made cakes, scones, fudge and preserves, to hand-made cards, knitwear, jewellery, ceramics, hand-made soaps and general gift items. In the spring there are often stalls selling plants.

9:00am – 12 noon
Saturday 3rd May
Saturday 7th June

DIDDI DANCE



Mondays 9:30am – 10:30am

We are the only pre-school dance class to cover 14 different dance themes. Using action songs, dancing games, fun exercises to funky pop songs, your little one not only improves their rhythm and co-ordination but also social and gross motor skills. To book your diddi one in for a free trial contact Louise Martin on 07767 702444 or log on to www.diddidance.com and let the fun begin.

The Triangle would like to take this opportunity to thank SHILLING for the design and printing of this newsletter.



Bryants Fruit & Veg Thursday mornings 8:00am – 1:00pm at The Triangle

What's on at...

The Triangle?

BRIDGE TEA

Friday 16th May, 2pm

Join us for an afternoon of excellent Bridge and delicious tea. Contact The Triangle to reserve your table.



TOILET REFURBISHMENT UPDATE

The Trustees wish to thank everybody who has either helped with Fundraising or donated funds towards the refurbishment of our loos.

We are delighted to announce that the Association has been awarded a grant of over £16,000. There are some technical issues that we are in the process of sorting out with our landlord which have delayed the project start. We hope, however, that the work will be completed before the end of the year.

COMPUTER CLUB

Drop in sessions on Mondays, any time between 9:30am and 12:30pm and we will endeavour to help with your computer queries. £2.50 per session.

Remaining sessions:

Monday 28th April

Monday 12th May

Monday 19th May

EXPLORING IN PAINT (AND OTHER MEDIA)

Lee Breeze Friday 25th April - 4th July
14.00 - 16.30 at The Triangle.

This course is suitable for beginners and those students who are interested in experimental approaches to creativity.

We will try out different kinds of mark-making (e.g. drawing, painting, collage, textiles...) in response to suggested concepts (e.g. 'light/dark', 'flow', 'path' ...) and with occasional reference to other artists.

Sara's Lunchtime Kitchen

Tues, Weds, Thurs 12:15pm – 2:00pm.



Various clubs and classes going on throughout the week...

Adult Education Classes

French, Italian and German at various levels. Please see our website or enquire at reception for details.

Art Classes

Petersfield Arts & Crafts Society,
Liphook & Bramshott Arts & Crafts,
Learn to Paint
Exploring in paint and other media

Children & Young People

Child Health Clinic
Triangle After School Club
Triangle Pre School
Parent & Toddler Groups
Woodcraft Folk
B.A.B.I.E.S
Breast feeding support
Diddi Dance
Little Tiger Club

Fitness & Wellbeing

Liss Forest Ballet School
Yoga
Pilates
Liss Runners
Walking for Health
Shiyong Tai Chi
Slimming World

Special Interest Groups

East Hampshire Self Sufficiency
Liss Area Historical Society
Liss Horticultural Society
Liss Knitting Club
Liss in Stitches
Liss Investment Club
Liss Bridge Club
Liss Archaeology Group
Genealogy Group
Rogate Bowls Club Social

Find us on Facebook



www.facebook.com