

TENTH ANNIVERSARY ISSUE

FAREWELL AND WELCOME

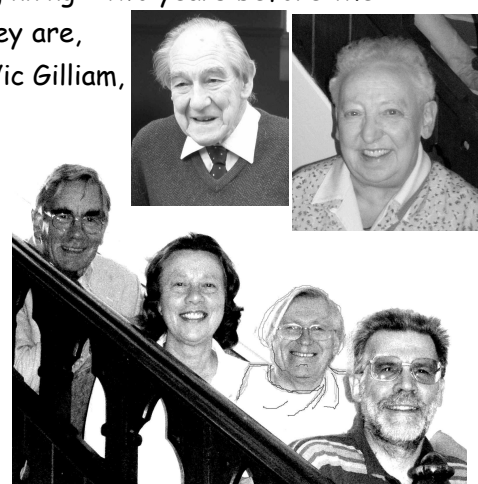
- We were sad, at the end of April to say good-bye to Linda Li-Davies when she retired as our manager. Her



professionalism, enthusiasm and energy have been a real asset over the last three years and all involved with the Triangle will miss her, though she has said that we might still see her around from time to time. We are delighted to welcome, as her successor, Vanessa Beech, (on the right in our picture) a Liss resident and mother of two sons who attend the local schools. We hope she will be really happy with us and we look forward to a long and fruitful partnership.

TRIANGLE PEOPLE - Top right in the collection of photos below is Pat white, founder chairperson of the Community Association.

Pictured with her are the elite group of trustees who are still going strong, having been part of the driving force of the Association from the very beginning - two years before the Triangle opened its doors. They are, anti-clockwise from the top, Vic Gilliam, Martin Hines, Sue Halstead, Colin Dring and Clive Seymour. We would also like to remember with gratitude Simon Woods and Ian Bolam whose untimely deaths robbed us of two most enthusiastic and committed founder trustees.



CALLING ALL L.C.A. MEMBERS: A reminder to all annual members that subscriptions for the coming year are now due. These will remain at £3.00 per household until the A.G.M. Please call in as soon as conveniently possible to pay for the year or - a good idea this - convert to life membership which is £15, again at least until the A.G.M

The ANNUAL GENERAL MEETING will be held on WEDNESDAY 20th. June at 8.00 pm.

Refreshments will be available from 7.30. Do come along to have your say in how the centre moves on into its next ten years. (see also the article on page 2)

HELP! The Triangle is facing a funding crisis and an uncertain future. It is not, as many believe, managed by the local authority but by volunteers from the community, assisted by paid staff and with some grant support. However, grants are increasingly hard to come by and must be earned by increasing amounts of volunteer input. In spite of the many hours of voluntary effort which underpin the centre it still costs £1500 per week to run and heating, insurance

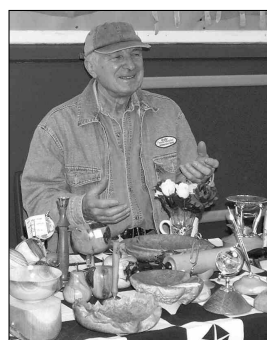
and other costs continue to rise inexorably. If you value the centre and want it to continue there are two things you can do - firstly give a little of your time. There are tasks large and small to suit all interests and the manager will be happy to discuss this with you. Secondly, become a regular donor as a 'Friend of the Triangle'. All households will receive information about this soon - please do not bin it without consideration.

Your Community Centre needs your support!

WHAT'S GOING ON?

Some of the moments photographed during the last ten years. What was the event?

Answers on back page





9



10



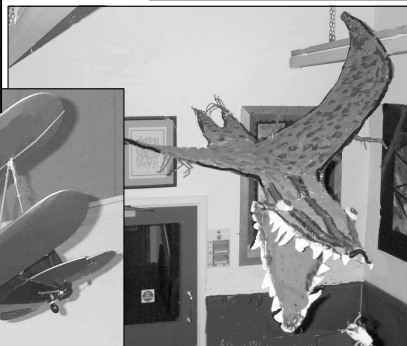
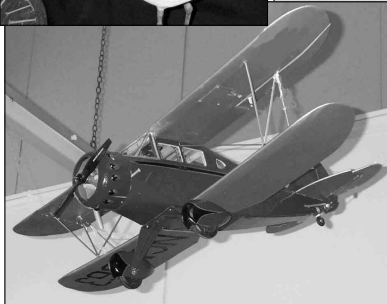
11



13



12



14



15

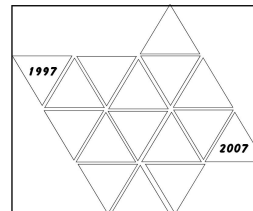


17

16



CALLING ALL CHILDREN: We would like to invite you to design a tile to celebrate the tenth anniversary of the Triangle Centre. All the tiles will be assembled into a mural to be permanently displayed in the centre and in addition there will be first second and third prizes for the tiles judged to be the best in the 3-8 yrs and 9-14 yrs. age groups. If you would like to take part in this project you will need to collect one of the special triangular tiles and a set of instructions which will be available soon in the Triangle Centre Office and the offices at the Infant and Junior schools. We ask that the completed tiles be returned to the Triangle Centre by September 10th. The finished work will be ready for viewing at our annual Arts Exhibition at half term in October and the winner's prizes will be awarded then. We hope that as many children as possible will want to be part of this project to produce a lasting art work for the village.



TENTH ANNIVERSARY TRIANGLE TEASER: We have a number of different challenges for you based on the words

'TENTH ANNIVERSARY'.

1. How many words of 4 or more letters can you make using the letters in these words. Each individual word may use a letter only as often as it appears, so a word could contain 3 'Ns' but only 1 'V'. 'Tenth' & 'anniversary' should be omitted and plurals are not allowed if the corresponding singular is in your list (i.e 'tent' but not 'tents').
2. What is the longest word you can construct? Rules are the same as in (1) but now a plural is allowable. This answer can also be part of the list for (1).
3. Can you find a set or sets of words which together form a complete anagram for 'TENTH ANNIVERSARY'. Excellence in this category might involve finding the largest number of different sets, or, a set of words which can be put together to make

LOCAL LIMERICK No.8

It's ten years since we opened our doors
And the Triangle's proud with good cause.
We're established as part
Of the village's heart.
Do we hear a small round of applause?

a reasonably meaningful sentence. Our editor has found one such set, the gist of the meaning of which might be encapsulated as 'You in charge of the farm vehicle, catch that bird!' Extra credit will be given to anyone identifying this set of anagrammatic words. Please submit your efforts, including a word count for (1) in an envelope marked 'Triangle Teaser' not forgetting your name and address and/or contact 'phone no. It should reach the Centre office on or before July 1st. There will be up to ten prizes (assuming we have enough entries) for the best achievements in the three categories.

ANSWERS TO PICTURE QUIZ: 1) Panto - Tales from the Ark. 2) Horticultutal Soc. Summer show. 3) The After School Club's painting of 'Victory' and dressing up for the 200th Trafalgar Day anniversary. 4) Leisure Showcase Day. 5) Walking to Health. 6) A tabletop sale. 7) 60th V.E.day anniversary party. 8) Christmas festivities 9) D-Day Anniversary Exhibition. 10) Military Railway Exhibition 11) Indulgence Day. 12) Junior School 10th anniversary procession from the centre. 13) Arts Exhibition works. 14) Quiz Night. 15) A 'Generous Helpings' charity lunch. 16) Opening of the weekday lunch bar. 17) Building works on, and re-opening of the coffee bar.

|

—

—

|