

TRIANGLE NEWS

Spring 2010

The newsletter of Liss Community Association serving the village and surrounding area of the Triangle



Clive & Penny Seymour, pictured with Charmian Porton, Chairman of the Triangle, at the lunch given in their honour recently to acknowledge the enormous contribution that they have both made to the success of the Triangle.

Clive was a member of the original steering committee set up to turn this redundant school building into a much needed community space. Since then he has held various posts on the Trustee Board (treasurer, chairman) and has also turned his hand to any DIY task that has cropped up. The annual Art Exhibition was entirely due to Clive's organisational skills, and which did much to put Liss and the Triangle firmly on the map.

Penny, determined not to be left 'home alone', put her artistic and imaginative skills to use as chairman of the Events committee organising most of the fund-raising activities held here. Penny could produce lunches and suppers for dozens, as well as designing eye-catching posters and flyers. The Quiz nights she devised were much more than brainteasers, as the Eggheads of Liss will testify!

All this and more - helping with the After School Club, W2H Walk Leaders - what a team! We shall miss them now that after 13 odd years they have decided to take a back seat. They are the epitome of what volunteering is all about.



The victorious Liss Artists - winners of the 2010 Triangle Quiz held on 6th March

Could you spare a few hours a month?

Do you have a few hours a month to spare to join the dynamic team that runs the Triangle ?

If so please contact the Triangle office on 01730 301000 or email info@liss-triangle-centre.org.uk

Liss Community Association, The Triangle, Mill Road, Liss, Hampshire GU33 7DX
01730 301000 www.liss-triangle-centre.org.uk info@liss-triangle-centre.org.uk
Triangle Manager: Vanessa Beech
Registered Charity No: 1050032



A Message from the Manager...



It finally feels like spring is on the way and we can all start to take advantage of the lighter evenings and warmer weather! Those of you who are regular users of our coffee bar can now enjoy your coffee sitting out in the courtyard again and I would like to say a big 'thank you' to the many volunteers who have helped to prepare the tubs, cut back the foliage and put up new trellis work.

Once again we are entering a team in the LiDBA 25 mile sponsored bike ride which takes place on Sunday 13th June, starting and finishing at Bohunt School in Liphook. If anyone would like to ride and raise money for the Triangle please call into the office, or sign-up on the sheet in the Triangle foyer.

We are also preparing for our LCA Annual General Meeting which takes place on the evening of Tuesday 15th June. Please make a note in your diary to come along to the meeting and share your ideas for the future of the Triangle. We are always looking for new volunteers and trustees and this is an ideal forum to find out what the LCA do and how you could get involved.

Thank you.

Vanessa

Liss Community Association AGM
To be held at the Triangle Centre
Tuesday, 15th June
7.30 for 8.00 pm



Courtyard Playground Wins Approval from Triangle After School Club Children

Now that the weather has finally improved, children from the Triangle After School Club have been enjoying the sunshine and playing outside in the refurbished courtyard playground. Work was carried out in 2009 to replace the old gates and resurface the tarmac. The children have used the outdoor space for skipping games, hula hooping, jacks and hopscotch and the Club has also been busy growing potatoes as part of a Potato Council project.

We would like to extend our grateful thanks to Hampshire County Council, Councillor Vaughan Clarke and Liss Parish Council who provided grant support for the project, which was topped up by the LCA through funds raised by the LiDBA Sponsored Bike Ride.

The playground is also used by the Triangles Pre-School and users of the coffee bar.

CAN YOU RIDE FOR THE TRIANGLE TEAM ??



LiDBA Bike Ride **Sun 13th June 2010**

- A 25 mile sponsored ride
- Starting and finishing in Liphook
- It's not a race - you just have to finish!
- The Triangle will pay your entry fee - but we ask you to raise at least £50 in sponsorship
- All money raised will be used to help support the Triangle
- Sponsor packs will be sent to you in May
- Last year our team raised £1,963.91 - so join in and let's raise even more this year!

Liss Community Association, The Triangle, Mill Road, Liss, Hampshire GU33 7DX
01730 301000 www.liss-triangle-centre.org.uk info@liss-triangle-centre.org.uk
Triangle Manager: Vanessa Beech
Registered Charity No: 1050032



Triangle Cinema In association with



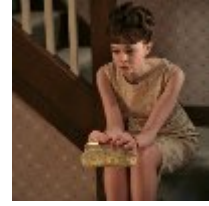
Saturday, 24th April

An Education 12A 95 minutes

Nominated for 3 Oscars

Starring Carey Mulligan

A coming-of-age story about a teenage girl in 1960s suburban London, and how her life changes with the arrival of a playboy nearly twice her age.



Saturday, 22nd May

Invictus 12A 125 minutes

Nominated for 2 Oscars

Starring Morgan Freeman and Matt Damon

Nelson Mandela, in his first term as the South African President, initiates a unique venture to unite the apartheid-torn land: enlist the national rugby team on a mission to win the 1995 Rugby World Cup.



Saturday, 26th June

Up In The Air 15 109 minutes

Nominated for 6 Oscars

Starring George Clooney

With a job that has him travelling around the country firing people, Ryan Bingham leads an empty life out of a suitcase, until his company does the unexpected: ground him.



Indoor Markets

The next market will take place on Saturday 24th April from 9.30am until 12 midday. Once again you will be able to do some of your weekend shopping and then enjoy some freshly brewed coffee and a cake in the coffee bar.

There will be a wide selection of stalls selling everything from hand-made cards, silk scarves and knitwear for children, to eco friendly household, personal and baby products. We also have a selection of cakes, cookies, scones and preserves, together with stalls selling hand-made jewellery and general gift items.

There are still a few stalls left and anyone who wishes to book should contact the Triangle office on: 01730 301000. The last market before our summer break will be on Saturday 22nd May. Further details on forthcoming events at the Triangle can be found on our website: www.liss-triangle-centre.org.uk



Liss has a lot of talent ...

- Iris Holt and Kay Peters performing at Liss Has Talent which was directed by Ruth Hiller with her team of willing volunteers and confirmed that there is a great deal of talent in Liss.
- If you are interested in taking part next February please contact either Ruth on 893422 or Linda on 893829.



Forthcoming Events at the Triangle

If you would like to participate /buy tickets for any of these events please contact the Triangle office on 01730 301000 or info@liss-triangle-centre.org.uk

Indoor Market - Saturday, 24th April

**Cinema Evening - Saturday 24th April
An Education**

**Bridge Tea - Tuesday, 18th May
2.00pm - £30 per table**

Indoor Market - Saturday 22nd May

**Cinema Evening - Saturday 22nd May
Invictus**

**Cinema Evening - Saturday 28th June
Up In the Air**



You are invited to a
Bridge Tea

at the Triangle Centre, Mill Road, Liss
on Tuesday, 18th May 2010 at 2.00pm

£30 per table

Everything needed for a good
afternoon of bridge will be provided.

The Triangle Centre is run on a voluntary basis by the Liss Community Association and is a much loved and used resource in the centre of Liss. In the current financial climate and with the Centre's escalating costs we now need to supplement our income with a series of fundraising events.

To reserve your table please send a cheque for £30 payable to LISS COMMUNITY ASSOCIATION and send it to The Triangle Centre, Mill Road, Liss, Hampshire GU33 7DX.

Tel: 01730 301000

Email: info@liss-triangle-centre.org.uk

A huge "thank you" to Linda Li-Davies and her team for the time and effort that they have put into some marvellous "Triangle" events. From *Sing For Your Supper* to the *Quiz Night*, *Liss Has Talent*, *Bridge Teas*, *Cinema evenings*, *Christmas Shopping*, *Dominic Holland* - none of these events and others would happen without the hard work put in by Linda and her team of volunteers.

Our Clubs and Societies

Call into the Triangle Office for more information

For Young Children & Mothers

Baby Clinic
Triangles Pre-School
Open Door
National Childbirth Trust

For Young People

Triangle After School Club
Woodcraft Folk
Power-Zone Youth Club
Boppins Dance Group

For Leisure & Learning

Archaeology Group
Bridge
Film Evenings
Art & Painting Classes
Language Classes
Knitting Group
Embroidery & Textiles
Self Sufficiency
Horticultural Society
Investment Club
Liss Ladies
The Historical Society
Genealogy
Arts & Crafts

For Health & Well Being

Walking to Health
Liss Runners
Yoga
Aromatherapy Massage
Pilates
Weight Watchers
Holistic Network

For Spiritual Well-Being

Hope Church

Liss Community Association, The Triangle, Mill Road, Liss, Hampshire GU33 7DX
01730 301000 www.liss-triangle-centre.org.uk info@liss-triangle-centre.org.uk
Triangle Manager: Vanessa Beech
Registered Charity No: 1050032

