

Triangle News

Winter 2014

Rapunzel

Proteus theatre production
for children,
Sunday 18th January

Ho
Ho
Ho!

**Don't forget our fabulous
festive village Christmas Fair,
Wednesday 10th December,
starting at 6pm.**

Plenty of fun for everyone including mince pies, live music, children's ride, charity and fundraising stalls and a delightful selection of Christmas goodies to buy.

The ever popular Christmas Raffle will be drawn on 19th December, including many wonderful prizes. Tickets go on sale from the Triangle centre from 1st December, only 50p each!

Strictly Come Dancing Final

Live screening

2015
**LISS
FILM
FESTIVAL**
19-22 FEB

FILM FESTIVAL

19TH - 22ND FEBRUARY

The 3rd Film Festival will be held from **19th February 2015**. Film titles are still under discussion, however we are recruiting volunteers to help with all aspects of the organisation. If you would like to be involved, or have 'not to be missed' film suggestions, please get in touch at centremanager@liss-triangle-centre.org.uk or telephone **01730 301000**.

CINEMA NIGHTS



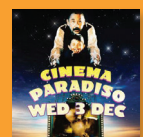
November 5th
Hannah Arendt

German with English subtitles. Biography/ Drama, 113 mins, cert 12A. Starring: Barbara Sukowa, Janet McTeer, Klaus Pohl, Nicholas Woodeson, Axel Milberg, Julia Jentsch.



November 15th
Belle

Drama, 104 mins, cert 12A. Starring: Gugu Mbatha-Raw, Tom Felton, Miranda Richardson.



December 3rd
Cinema Paradiso

Italian with English subtitles. Drama, 115 mins, cert PG. Starring: Philippe Noiret, Enzo Cannavale, Antonella Attili

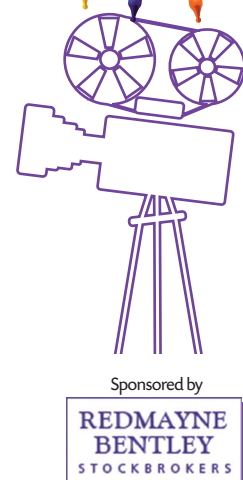
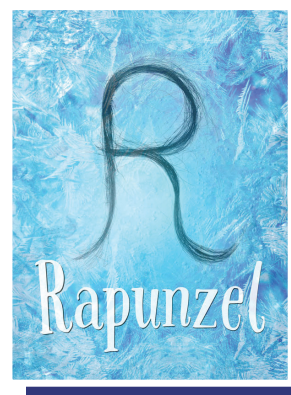
Doors for all films unless specified open at 7pm for film at 7:30pm. Further titles and dates for 2015 to be confirmed, please check the website or notice boards for an update.

RAPUNZEL

Proteus theatre production for children,
Sunday 18th January,
2:30pm for 3pm start.

Ever had problem hair? Can't do a thing with it? Feel like it has a life of its own? That's nothing compared to the problem that Rapunzel has! This is the story of a young girl with an overbearing mother, a prince for a boyfriend with vertigo, and very, very badly behaved hair.

Award-winning Proteus Theatre Company brings you a hair-raising, foot-tapping, high-flying 'wash and blow dry' of a show, with music, puppets, gravity-defying actors and a guarantee of bad hair days.



Sponsored by
**REDMAYNE
BENTLEY
STOCKBROKERS**

LIVE ON THE BIG SCREEN

Saturday 20th December.
7:00pm for 7:30pm start.

Come and immerse yourself in sequins and glitter as the finalists compete for the glitter ball!

All tickets in advance £3.00, which includes your first drink free. Nibbles and licensed bar.

Get your own panel together and we will supply the paddles!

TRIANGLE QUIZ

Saturday 7th March, 7pm
for 7.30pm start.

For further information and tickets contact
The Triangle Centre
01730 301000,
info@liss-triangle-centre.org.uk

WELL DONE!

Fundraising for the Red Cross
Judy's Autumn Berry Coffee
raised £192, making a total of
£1,077 for the Red Cross.

COMPETITION!

Get your photo on the cover of the Spring edition

Do you fancy seeing your photo in print? Once again we are giving budding photographers a chance to have their photo appear on the front cover of the March 2015 edition. We are looking for an inspiring photo to sum up Liss in the early months of 2015. All entries to be emailed to: info@liss-triangle-centre.org.uk

HAPPY SNAPPING!

GALLERY WALL

The Gallery Wall in the cafe is used to display the work of local artists. It may be booked for a calendar month at a time and all art work must be for sale. There is no fee for displaying art work, but the LCA will charge 20% commission on every item sold. There are still spaces for 2015, including January and February, so please get in touch at info@liss-triangle-centre.org.uk if you would like to take advantage of this opportunity!



TRIANGLE AFTER SCHOOL CLUB



Firstly I would like to thank the Coffee bar for their generous donation of £250. This has enabled us to purchase some new drawer units to replace our old ones which were falling apart. We also acquired some table tennis equipment and some of the infamous loom bands which have been very popular with the children.

This year for the art exhibition the children have been creating terrestrial, aquatic and universal landscapes. These will be on show in the Coffee Bar until December.

For the final weeks of the autumn term we have decided to hold two 'in house' competitions. The first will be to design the LCA Christmas card and the second to design a new club logo. This should keep everybody busy.

Finally TASC would like to thank the LCA staff, volunteers and people from the wider community for their continued support, which has enabled us to provide a high standard of affordable care.

Sandy Turner

Find us on Facebook



www.facebook.com

MACMILLAN COFFEE MORNING

Well done to the Coffee Bar volunteers! They raised a very healthy sum of £338 on Saturday, which the Coffee Bar Committee will increase to **£400**.

There was a lovely array of home made cakes on sale, from pretty cupcakes to whole fruit cakes.

Thank you to everybody who supported this event.

**WE ARE
MACMILLAN.
CANCER SUPPORT**

Thank you!

LISS INFANT SCHOOL

Would you like to support your local infant school? Liss Infants are raising money for their PTA by holding a table top sale on **15th November, 10am - 1pm** and a 'Frozen' themed Christmas Fayre on 6th December, 2-4pm. For further details visit www.lissinfantspta.org.uk



Bryants Greengrocer
– fresh fruit & vegetables every
Thursday morning
at the Triangle from
8.30am – 1.00pm.

Ticket prices: Adults: £8.75 | Children: £5.00 | Family: £25 (2+2)

What's on at... The Triangle?

Various clubs and classes
going on throughout
the week...

Language Classes

French: All levels Beginners – Advanced.
Italian: All levels Beginners – Advanced.
German: Beginners & Improvers.

Art & Craft

Bramshot & Liphook Art & Craft
Society
Learn to paint
Exploring in paint (& other media)
Petersfield Arts & Crafts Society
Liss Knitting Club
Liss in Stitches

Children & Young People

Child Health Clinic
NCT B.A.B.I.E.S
Tiny Talk
NCT Small Talk
Open Door Parent & Toddler
Triangle After School Club
Triangle Pre-School
Woodcraft Folk Youth
Brownies

Health & Fitness

Liss Forest Ballet School
Petersfield Academy of Dance
- Tap & Modern Dance
Hey Joe Pilates
Whole Body Pilates
Shiyong Tai Chi
Yoga
Yoga for All
Liss Runners
Walking for Health
Running Bear Physiotherapy
& Acupuncture
Remedial Massage
Slimming World

Clubs & Societies

Liss Archaeological Group
Liss Area Horticultural Society
East Hampshire self-Sufficiency Group
Liss Bridge Club
Genealogy Group
Liss Investment Club

MONTHLY INDOOR MARKETS

The monthly Saturday morning
indoor markets have now finished
for this year and will be taking a
break for a couple of months,
however, they will be back in 2015!

Further dates for 2015:

7th February
7th March
4th April

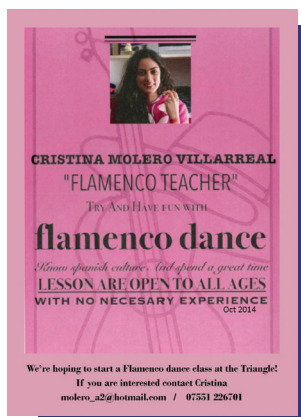
If you fancy having a stall in the new
year, to sell anything you wish from
crafts or jewellery to homemade cakes
or preserves, then please contact
the office or complete the
online form, £7.50 a table.



BRIDGE TEA,

Friday 30th January, 2pm.

Join us for an afternoon of
excellent Bridge and delicious tea,
£30 for a table of 4, contact the
Triangle to reserve your table.



LISS HORTICULTURAL SOCIETY

Tuesday 2nd December,
7:30 pm - Talk by Malcolm
Moodie - Orchids of Ecuador.

LISS IN STITCHES

Tuesday 18th November:
Talk – New Fibres and
Eco-friendly Yarns.
Saturday 22nd November:
Workshop – Altering fabrics
using methods demonstrated
in the recent talk.



REMEMBRANCE DAY SERVICE LIVE SCREENING

Coverage of the remembrance day
commemorations at the Cenotaph
in Whitehall will be shown live on the
big screen in the Triangle on
Sunday 9th November.
The coffee bar will be open
from 10am – 12pm.

LISS AREA HISTORICAL SOCIETY

Christmas Social Evening and talk
by Dr Bob France

"The Man who built Upark".

Thursday 11th December, 7:30pm

Non members welcome.



For further information on all of
the above please call the office on
01730 301000, visit
www.liss-triangle-centre.org.uk
or email:
info@liss-triangle-centre.org.uk